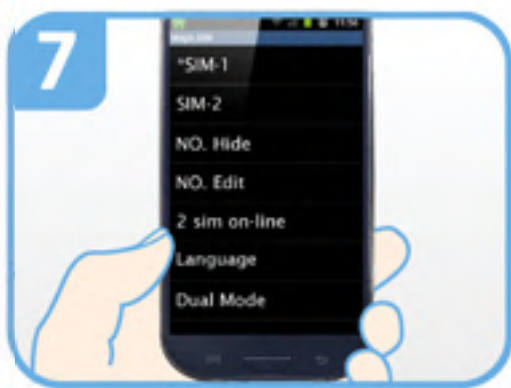
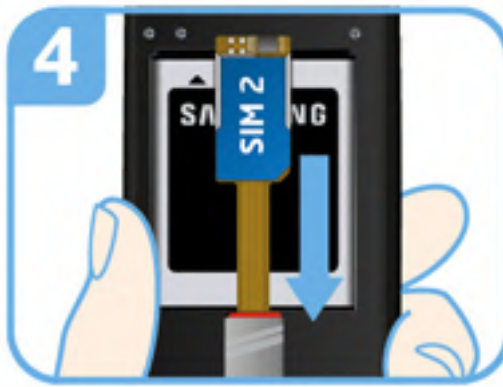
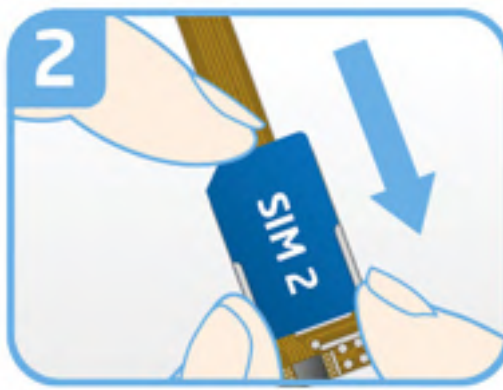
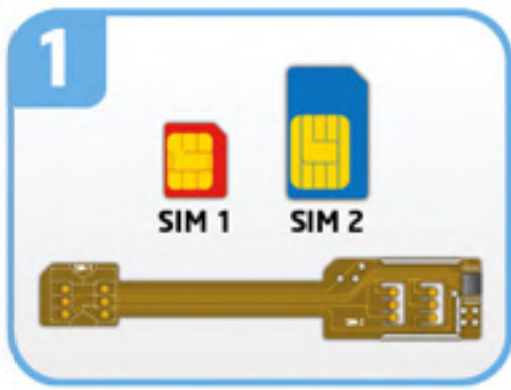


# MAGICSIM ELITE GALAXY NOTE 4 - MICRO SIM

## INSTALLATION GUIDE



1 Take the MAGICSIM adapter and your SIM cards.

2 Insert a standard sized SIM card into the SIM 2 position of the MAGICSIM adapter.

3 Place a MICRO SIM card, chip-side down, onto the SIM 1 section of the adapter.

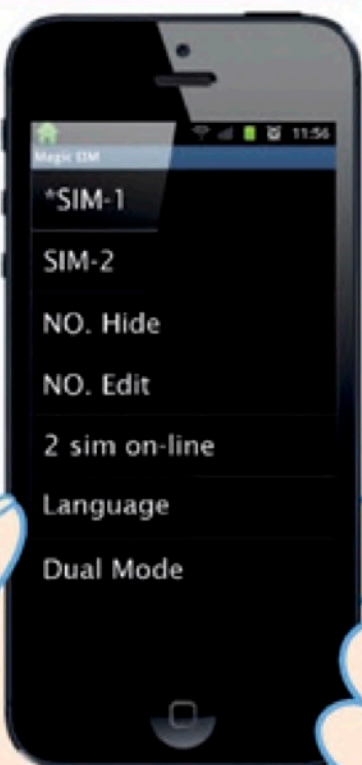
4a Insert the MICRO SIM (SIM 1) section into the SIM slot in your phone.

5 Make sure your battery is placed securely in the phone and replace your mobile phone's cover.

6 Turn your phone on and locate the STK-Menu (sometimes called DUAL-SIM or SIM TOOL KIT)/ This is located in the Apps folder in smartphones and usually in the "Networks" section of older phones.

7 The STK menu can be used to switch SIMS, select your Dual SIM mode, set your switching Autotimer, and manage all things Dual SIM-related on your phone.

## STK MENU



### **SIM-1:**

Selects SIM 1 as your active SIM.

### **SIM-2:**

Selects SIM 2 as your active SIM.

### **Hide (not recommended):**

Bypass your usual answerphone message so your inactive SIM greets all calls with: "the number you have dialed is not connected".

### **NO. Edit:**

Renames SIM 1 and SIM 2 as numbers of your choice. Your phone will indicate which number is currently active on the home screen.

### **2 SIMS ON-LINE (autotimer):**

Programs the adapter to autoswitch SIMs at a timed interval. Simply set the amount of time each SIM to be active: e.g. SIM 1 - 30, SIM 2 - 10 sets SIM 1 as active for 30 min. before swapping to SIM 2 for 10 min. The minimum time we recommend settings each SIM for is 10 min.

### **LANGUAGE:**

Select the Dual SIM menu language. You can choose between English, German, Italian Spanish, Turkish and Russian.

### **DUAL MODE (007 mode):**

In '007 mode' you can switch SIMs simply by dialing '001' (for SIM 1) or '002' (for SIM 2) on your phone. This option causes the STK menu to temporarily disappear - to retrieve the STK menu dial '007' on your phone. This option causes the STK menu to temporarily disappear - to retrieve the STK menu dial '007' on your phone.